

EC 135

SERVICE BULLETIN

Emergency Medical System – Replacement of Placard on Avionics Shelf

1. Planning Information

A. Effectivity

1. **Helicopters affected:** Eurocopter EC135 helicopters equipped with ECD autopilot and with a Metro Aviation Emergency Medical Systems installed in accordance with STC SR09164RC having avionics shelf modified and installed in accordance with MAI drawing 135M-150.
2. **Components affected:** Placarding and avionics shelf installations
3. **Spare Parts affected:** Modify all spare assemblies.

B. Concurrent Requirements: Not Applicable.

C. Reason: A modification was accomplished on some aircraft to allow the forward edge of the avionics shelf to be raised approx. 3 inches. To accomplish this on aircraft with the autopilot pelican rack installed, a section of the avionics panel was removed allowing the Pelican rack to remain in the same relative position. The originally installed placard utilizing the ECD load limit of 154 pounds was not changed. Subsequent analysis has revealed that the shelf, after the modification, is limited to a total of 70 pounds of equipment, distributed across the panel.

D. Description: This service bulletin gives you the procedure to evaluate the shelf to ensure no additional equipment has been installed that may move the total weight installed above the 70 pound limit, and to remove the placard currently installed and install a new placard indicating the 70 pound limit.

E. Compliance: It is recommended that this service bulletin be incorporated at the earliest opportunity but in no case no later than the next modification of the shelf or the next aircraft reweight and equipment verification.

F. Approval: Technical aspects are FAA approved on drawing 135M-150 Rev. C.

G. Manpower: .5 man-hours are required to evaluate the equipment installed and replace the placard.



- H. **Weight and Balance:** Not applicable.
- I. **Electrical Load Data:** Not applicable.
- J. **Software Accomplishment Summary:** Not applicable.
- K. **References:** Metro Aviation, Inc drawing 135M-150 Rev. C
- L. **Other Publications affected:** Not applicable.
- M. **Interchangeability of Parts:** The new parts supersede the old parts.

2. Material Information

- A. **Material - Price and Availability:** A placard is available at no charge from Metro Aviation, Inc. Spares.
- B. **Support Information:** Not applicable.
- C. **Material Necessary for Each Helicopter:**

Item No.	New P/N	Description	Old P/N	Qty	Disposition/Instructions
1	135M-150-16	Placard	135M-150-15	1	Discard

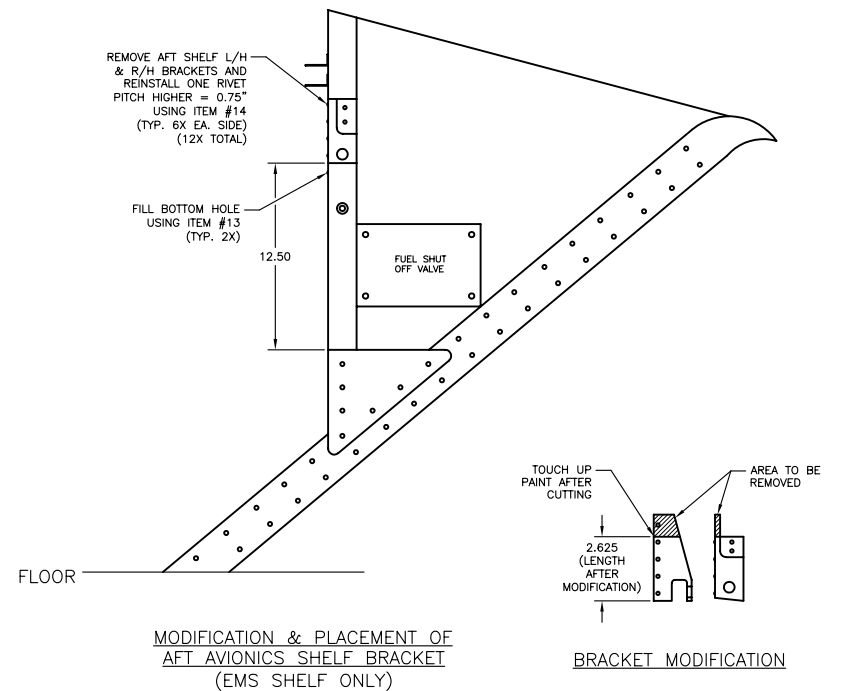
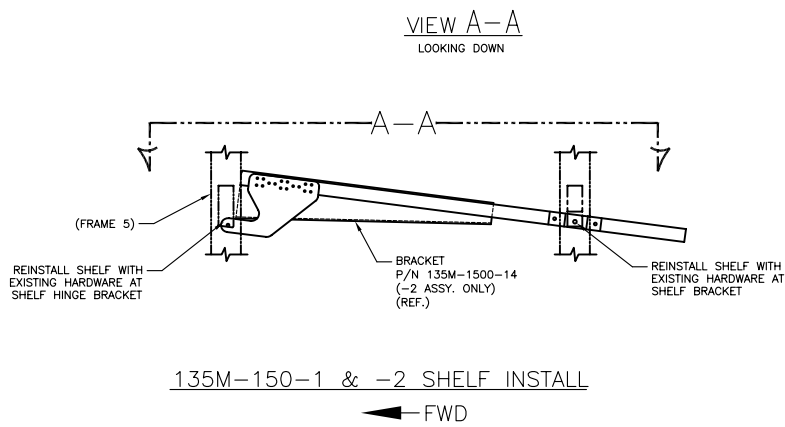
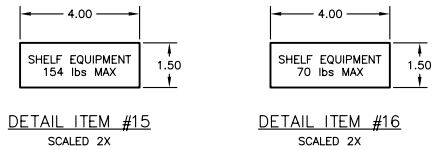
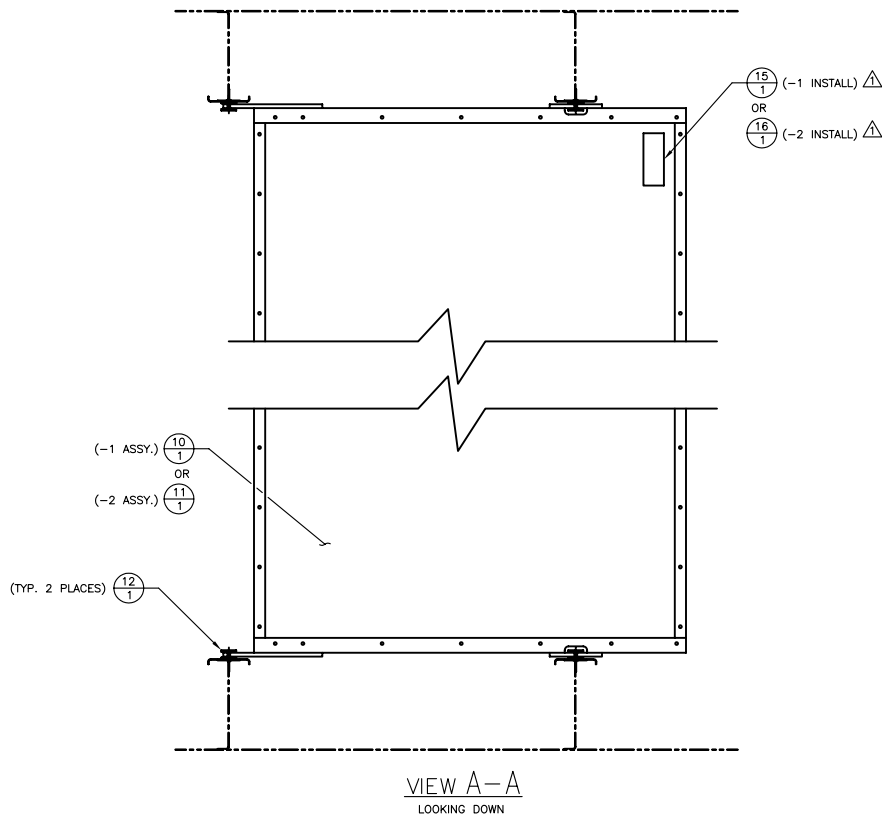
3. Accomplishment Instructions:

- A. Gain access to the avionics shelf area.
- B. Remove 154 pound placard and install new 70 pound placard in accordance with drawing 135M-150 Rev. C.
- C. Verify the installed weight attached on or below the 135M-1500 shelf does not exceed the 70 pound limit. Relocate equipment as necessary to reduce the installed weight.
- D. Make the appropriate entries in accordance with the locally governing regulations and authorities, as applicable, in the aircraft logbooks.

NOTES:

△ RED GRAVO-PLY WHITE LETTERING.
INSTALL USING 3M 1300L CONTACT
ADHESIVE.

REV	DESCRIPTION	APP	DATE
IR	INITIAL RELEASE	MKG	11/15/96
A	ADDED ALTERNATE PLACARD	MKG	4/2/97
B	ADD -2 INSTALLATION	MKG	26 OCT 09
C	ADD PLACARD FOR -2 INSTALL	MKG	2 JUN 10



QTY	ITEM	PART NO.	NOMENCLATURE	STOCK/SIZE	SPEC/VENDOR	FINISH
1	16	-16	PLACARD	CYRO XT POLYMER	GRAVO-PLY	△
1	15	-15	PLACARD	CYRO XT POLYMER	GRAVO-PLY	△
12	12	14	MS20426D4-4	RIVET	-	-
2	2	13	MS20426D4-3	RIVET	-	-
2	2	12	91225A060	WASHER	PHENOLIC	McMASTER CORP.
1	11	135M-1500-2	SHELF ASSY	-	MAI	-
1	10	135M-1500-1	SHELF ASSY	-	MAI	-
✓	✓	✓	-2	INSTALL		
✓	✓	✓	-1	INSTALL		

PROPRIETARY RIGHTS STATEMENT:
 THE DATA CONTAINED WITHIN THIS DOCUMENT IS PROPRIETARY TO METRO AVIATION, INC. DISCLOSURE OR USE OF THIS DATA FOR ANY PURPOSE IS FORBIDDEN WITHOUT WRITTEN AUTHORIZATION FROM METRO AVIATION, INC.

UNLESS OTHERWISE SPECIFIED:
 TOLERANCES: DECIMAL: .001 ANGULAR: 1° MACHINED SURFACE: 12.5

DATE: 15 NOV 96 SCALE: 1/4 SHEET 1 of 1 REV: C

METRO AVIATION INC.
 P.O. BOX 7036, SHREVEPORT, LA 71137
 TITLE: AVIONICS SHELF INST EG-135
 APP: MKG
 DWG NO: 135M-150